

## Nimbus Technologies

"The history of WellinTech is a continuous history of science and technology innovation."

### Who we are

WellinTech Co., Ltd is a professional automation software company, headquartered in Beijing, China, dedicated to develop a wide variety of industrial automation software and serve various automation industries with its state-of-the-art industrial automation solutions. WellinTech has been maintaining branches in different countries around the world such as Singapore, Japan, South Korea, China Taiwan, and has built three R&D centers in Beijing, Tianjin, and Xi'an. We have been serving automation industries with our excellent software solutions for over 20 years.



### Contact Us

225, Globe estate, MIDC PLOT  
NO C9 Phase 1, New Kalyan Rd,  
near vikas nakka, Dombivli  
East, Dombivili, Maharashtra  
421203,  
[Email- Sales@nimbus-  
technologies.com](mailto:Sales@nimbus-technologies.com)



*Free Trial. Free 1-hour Online Training. Free Technical Support*

## KingView 7.5 Industry Standard Industrial Monitoring & Control Software

KingView® is a powerful industrial software for monitoring & controlling industrial processes. With its 20 years of development history, it has always been a leading automation software in the Chinese automation software market. KingView is used in various industries and has achieved the customer's recognition and reputation in international markets due to its remarkable features such as easy-to-use interface, smooth navigation, web publishing functions, local & remote data visualizations. It features strong IO driver support, multiple device compatibility, customized OEM services, project security, price performance, and many more. KingView 7.5 inherits powerful functions, stability, and reliability of operations. It also put forwards 'Second Development' concept, and adds electronic record feature by following FDA 21CFR Part 11 and GMP specification for quality tracing. (For more info, please visit at: [www.wellintech.com](http://www.wellintech.com))

[www.nimbus-technologies.com](http://www.nimbus-technologies.com)

# Table of Contents

## KINGVIEW 7.5 -NEW FEATURES

- ❖ Template, modular configuration, engineering efficiency ..... 1
  - ✓ Data acquisition template.....3
  - ✓ Picture template ..... 4
  - ✓ Script template ..... 5
  - ✓ Graphic template ..... 5
  
- ❖ The opening API interface XML technology, flexible systems integration ..... 6
  
- ❖ KingView mobile client-adapt to the need of mobile internet era ..... 7
  - ✓ Main features
  
- ❖ In line with FDA 21CFR Part11, GMP electronic signature & recording function ..... 8
  - ✓ Main functions
  
- ❖ Import AutoCad graphics into the picture of KingView ..... 9
- ❖ New license system-easier to use ..... 10
- ❖ Usability improvement & workload reduction.....10
- ❖ KingView main features .....11
- ❖ KingView advantages ..... 13
  
- ❖ **Our Product Line**.....14

# Our Product Line

## Monitoring and Control Platform -KingView/KingSCADA



Most renowned and applied supervisory control and data acquisition platforms

Product: KingView/KingSCADA

## Data Acquisition Platform -KingIOserver



Professional independent data communication platform

Product: KingIOserver

## Data Storage Platform -KingHistorian



Commercialized industrial real-time data base storage software

Product: KingIOserver

## Manufacturing Execution Platform -KingFusion



Full configuration platform with management and control integration

Product: KingFusion

Please visit at: [www.nimbus-technologies.com](http://www.nimbus-technologies.com)

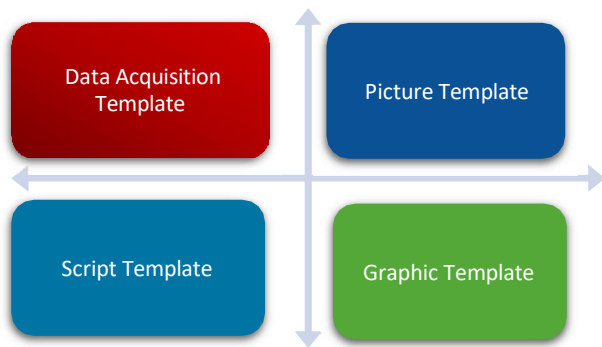
## KINGVIEW 7.5-NEW FEATURES

### ❖ Template, modular configuration, engineering efficiency

KingView 7.5 provides multiple template features. The template created for a specific project gives the advantage over other projects where the similar type of devices, tags, and script etc.as the previous project are expected. The users can use the same template for new projects by only switching to the project and replacing necessary configurations, variables, tags, strings etc. This way allows users to quickly set up the project.

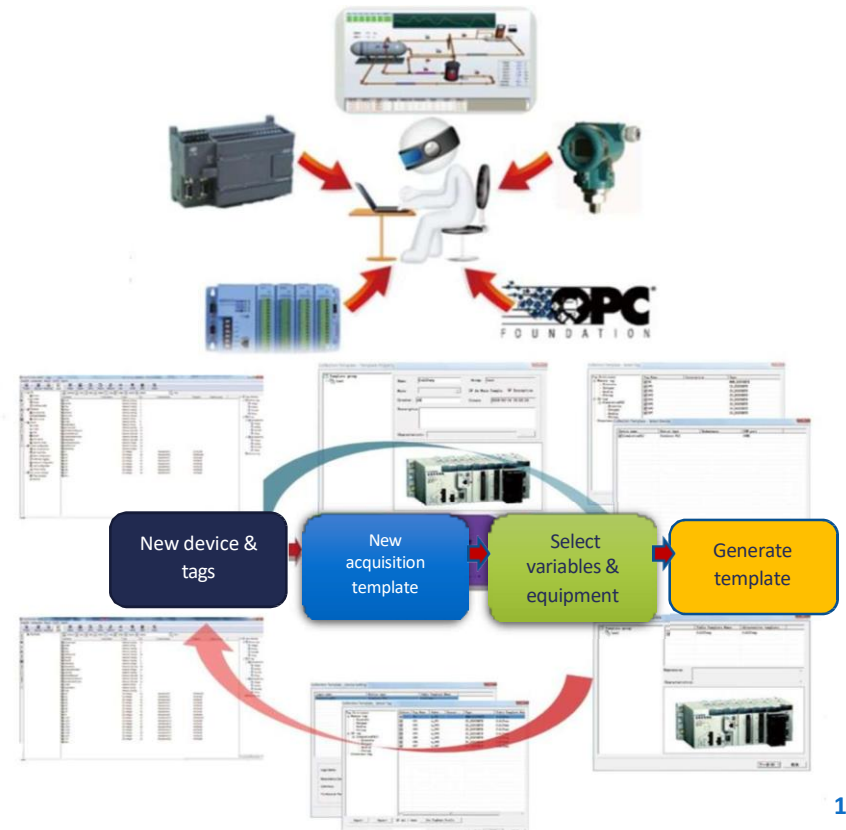
It provides centralized storage management and password protection for template.

*Template has four types: data acquisition template, picture template, script template, and graphics template.*



### 1. Data Acquisition Template

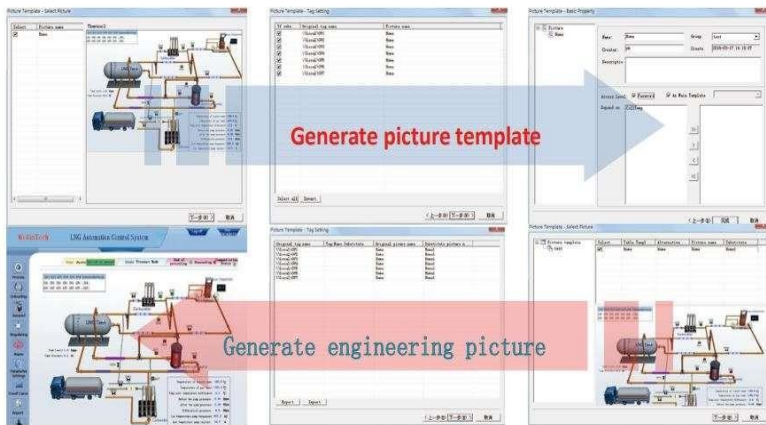
Data acquisition template contains IO Device information and its associated variable information. Multiple templates can be generated for multiple devices with their variables at the same time. Generate data acquisition templates with common devices and relevant variables, no need to create devices and configure tags one by one while developing new projects; follow wizard dialog box, select device and variable from the template, and generate the IO devices and variables quickly. Each acquisition template can be given characteristic pattern, so that it can be recognized easily while browsing and using.



## 2. Picture Template

Picture template contains all the graphical elements and components which can be used in the KingView picture, such as controls and screen scripts. Save Common picture as template, no need to develop pictures and configure connection animation property one by one while developing new projects. Select the picture template through wizard, and then replace the associated variables and strings, one key generates the desired picture.

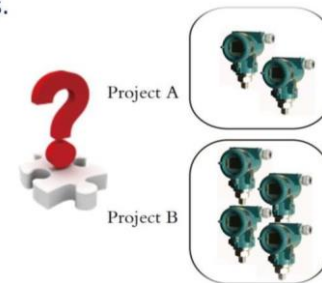
*During the process of creating a picture template and picture instantiation from the template, you can see the thumbnails of the images directly from the wizard, which is very intuitive.*



Picture template process

## 3. Script Template

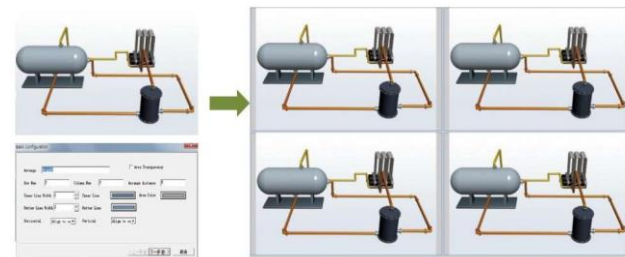
Script template includes all the configuration script-the application scripts, data change scripts, event scripts, hotkey scripts, custom functions, and so on. A script template is customized as "calculation module". When developing a project, select "calculation module" from template via wizard, replace the associated tags and strings, and then generate the new script. While generating multiple sets of "module", you can choose to merge or overwrite the existing scripts.



## 4. Graphic Template

In each project, there will be many devices of the same type; the main difference is the number of devices and the rest in the picture are all the same; in such situation a proper picture will be developed quickly. That is "layout element" feature in KingView 7.5, which can help customize, layout complex graphic quickly.

Engineer used to add or modify the graphics manually. Now, through "layout elements" and graphic templates, we can configure variable and string in the picture and create the graphics quickly.



Layout process

### ❖ The opening API interface XML technology, flexible system integration

XML Language, with its better scalability, normative, readability, compatibility and transmission characteristics make it one of the widely used languages in enterprise integration and application development. In the development environment of KingView 7.5, it provides open interfaces based on XML technique and extensive import and export, and the function of transferring engineering data to visualized standardized XML; also provides the corresponding API interface to allow to use third-party software platform to develop and configure applications.



All objects in the KingView project, such as variables, equipment, pictures, scripts, and so forth can be transferred by this feature and described easily by XML Language. The project file described by XML format can be imported easily to KingView and run directly without any modification.

KingView runtime system provides a complete data access API interfaces for real-time, historical data, real-time and historical alarm, which enhances data communication capacity greatly with the third-parties, and improves the capacity of interconnection among systems and data exchange with the upper management system.

### ❖ KingView mobile client-adapt to the need of Mobile Internet era

KingView mobile client product help the manager and the operator understand and control the production process and the equipment status everywhere. It helps people get the real-time data and alarm, analysis and report, and generates all kinds of needed report and trend graphic to realise mobile office. To make the production process more transparent to the management, it helps improve management efficiency.

KingView mobile clients can also be installed on the operator's handheld terminal to control equipment in real-time with proper authority.



### Main Features

- ✓ Support for multiple platforms, including Android, iOS, Windows and so on;
- ✓ Provide reporting, trend curves, and multiple ways to display data;
- ✓ Mobile terminal supports real-time data, historical data and alarm data monitoring;
- ✓ Mobile terminal supports remote operation on the device, such as the start-stop, parameter configuration;
- ✓ Secure user management and service management; ensure safety of operation and data browsing;
- ✓ Flexible deployment, use IE Browser directly, or install APP;

- ✓ Support abundant sources of data, including KingView, relational database, Excel, KingSCADA, KingHistorian Products of WellinTec.
- ✓ Thin client, small data flow, thus cost savings;
- ✓ Independent WEB Service, have small influence on the SCADA System;
- ✓ Flexible expandability, easily add and integrate needed third-party applications and components.

#### ❖ In line with FDA 21 CFR Part11, GMP electronic signature& recording function

Electronic signature & E-record is a signature which being used to request the operators in food, pharmaceutical, and other industries record all the operation in the production process to standardize production management. It also has a specific requirement for configuration software, requests strong security, strict user authentication, rights management, and auditing measurement to meet specific security requirements of FDA 21 CFR Part 11 items. All of these are for standardizing production and reducing production accidents.

KingView 7.5 has added electronic signature products & Electronic records features to meet CFR 21 Part 11 related items and GMP standard



## Main Functions

- ✓ User security management, password configuration;
- ✓ E-signature configurations for tags, recipes and so on, sign and verify signature while running;
- ✓ Provide signature signing and verifying function in the script;
- ✓ Completely record all the configured operations;
- ✓ Each electronic record has a unique verification code, ensure that data cannot be arbitrarily modified;
- ✓ Independent electronic record tool, can verify the authenticity and integrity of electronic records, electronic records can be queried in variety conditions, and output with PDF files or print output.

#### ❖ Import AutoCAD graphics into the picture of KingView

KingView 7.5 supports to import graphics designed by AutoCAD into the picture of KingView and converts to King view graphic elements. An Engineer doesn't need to design and develop same graphics in KingView, which greatly reduces configuration workload.

KingView supports all kinds of the basic graphic element and the blocks integrated by these elements from AutoCAD, those graphic elements are imported into KingView and converted to KingView graphic elements automatically, the elements can be configured with the animation links.



### ❖ New license system-easy to use

KingView 7.5 provides not only hard key, but also soft license to meet the demands of projects which are not available to use hard key. Our new license system realises the remote authorization function. In a local network, the license is installed in one PC, but project can be authorized in another one. With this feature one license can be used in different PC, which reduces the cost of license purchasing. Otherwise, we provide a new feature called "The second authorization", this feature allows our users to add their own information based on our license system and set some customized permission in the final projects.

### ❖ Improve usability, reduce workload

In KingView 7.5, we improved some features and added some new function components as below:

- ✓ New resolution conversion solution, more conversion mode and solution to the issue of graphic distortion.
- ✓ Provide the way of "The second authorization", allow customers to set their own permission on the project;
- ✓ For easy management of screens, scripts, variables, etc., the "Find" function has been added in the Touch Explorer to facilitate quick search and editing! Add a toolbar to put common features in the toolbar for easy access.

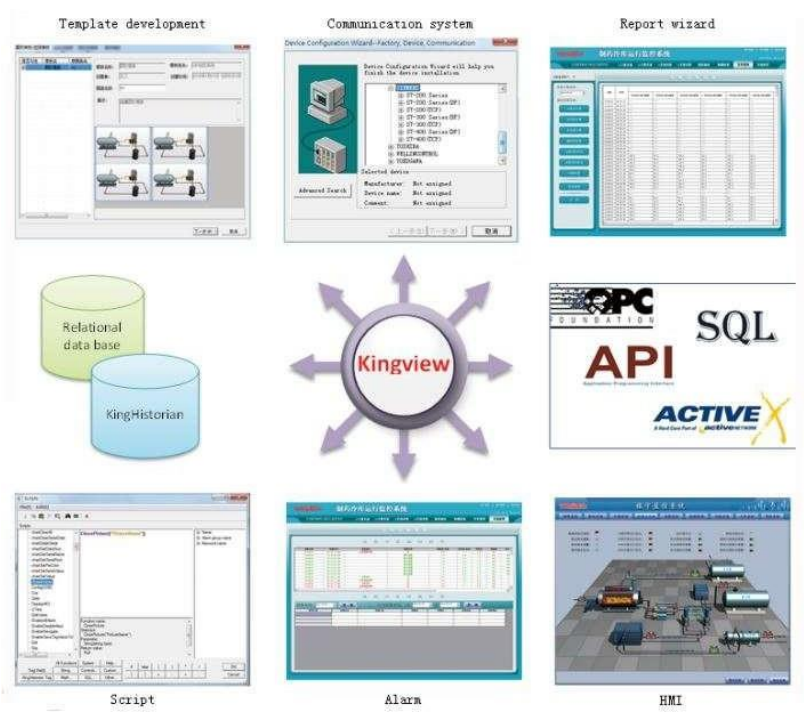


- ✓ About tag management, add grouping by memory, IO and device group. Make the management clearer and simpler.
- ✓ In script editor, add functions of quick browsing and help button, and smart function prompt are available.
- ✓ Make the graphic library richer; add graphic templates for many industries.
- ✓ Alarm window allows users to edit the customized title and print function for alarm window;
- ✓ Embedded report support to be saved into Excel format and load Excel files directly.
- ✓ Embedded report system provides development wizard for KingHistorian and SQL database, simplify the developing of tour report, daily report, weekly report;
- ✓ New embedded bar chart control, add "serial" function, and simplifies the data analysis.

### ❖ KingView Main Features

- ✓ Support multiple communication protocols; support GPRS, SMS, and OPC communication mode;
- ✓ Embedded script, support timing, triggering and custom functions for flexible extension;
- ✓ Provide efficient and rich industrial graphics libraries for many specific industries;
- ✓ Powerful alarm system, support real time printing, alarm SMS, alarm email;
- ✓ Embedded historical database, meets the demand of long-time data storage;
- ✓ Support Active X control, expand the application easily;
- ✓ Support SQL, access to all kinds of database;
- ✓ Support recipe function;

- ✓ Embedded report system, custom real time and historical report, provide report wizard, configure the KingHistorian and SQL database reports without scripts;



- ✓ Multiple redundancy functions, support dual machine redundancy, dual device redundancy, dual network redundancy and etc. With high performance, responds within 1 second;
- ✓ Support CS and BS mode, meet user' s demands

❖ KingView Advantages

- ✓ Driver supports a wide range of SCADA software, supports more than 5000 drivers and protocols.
- ✓ Recent 20 years, over 200,000 licenses and running authorization, stable and high-performance; [Over 20 years, more than 200,000 licenses and running authorization, high-stability and cost-effective.
- ✓ Great continuity in usage habit, product style, engineering compatibility in each version, reduce the learning costs and engineering maintenance.
- ✓ Good openness, variety of ways for data access, easy to use.
- ✓ Better project security and safety for data exchange.
- ✓ Wide range of industrial applicability-a special solutions to enhance your product value.
- ✓ Professional and excellent technical team to solve all your technical issues timely.